

Wireless Tank Level System

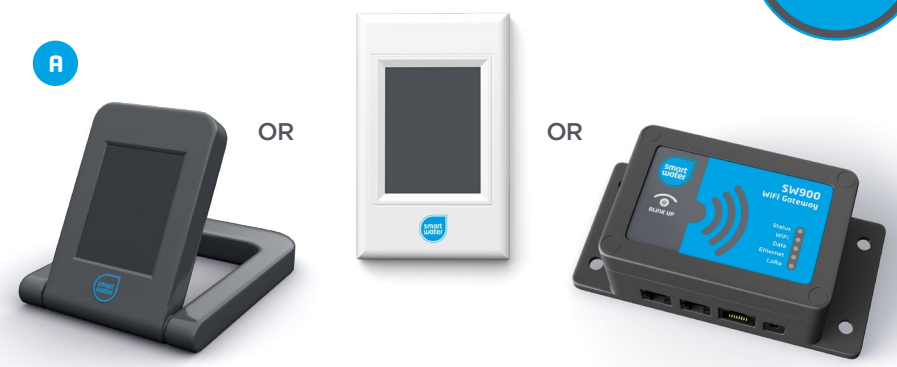


Quick Start Guide



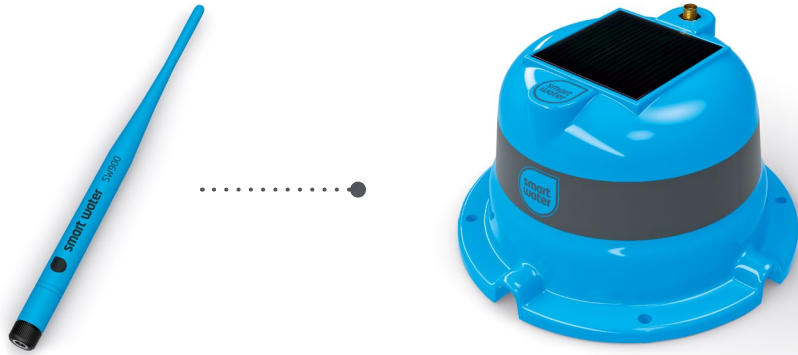
Components in the kit

- A WiFi LCD Keypad **or** WiFi Gateway
- B Water Sensor
- C Tank Transmitter **and** Mounting Screws
- D Antenna
- E Power Supplies

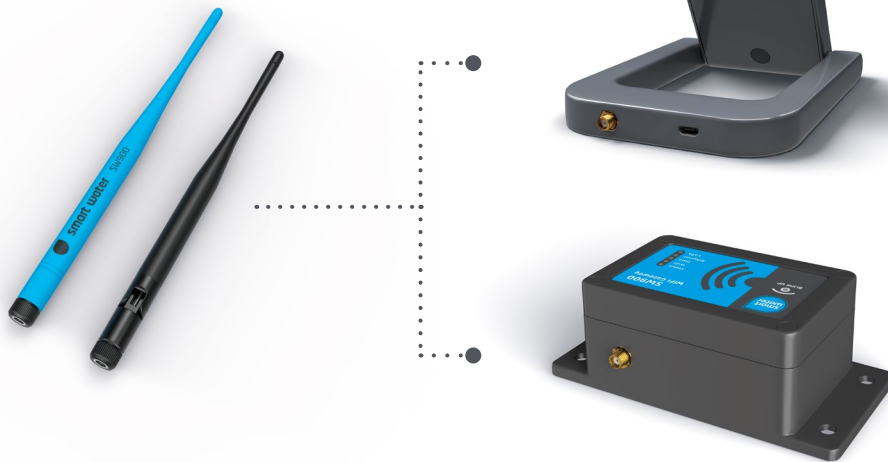


Step 1

Attach **Antenna** to the **Tank Transmitter**.



Attach **Antenna** to the **LCD** or **Gateway**.



Step 2

Plug in the **Power Supply** and connect it to the **LCD** or **WiFi Gateway**.



Note: For the Wall Mount WiFi LCD Keypad, Smart Water recommends installation by a certified electrician.



Step 3

Connect the **Water Sensor** to the connector on the underside of the **Tank Transmitter**. Rotate the thumb screw on the end of the connector until it is securely locked.



Once the connector is plugged in the LED will flash green until the unit has successfully booted up.

Step 4 (LCD)

Ensure the LCD is in the **"Add Device"** screen.



Press and hold the **Connect Button** on the bottom of the **Tank Transmitter** until the LED illuminates blue for two seconds, followed by two short white flashes.



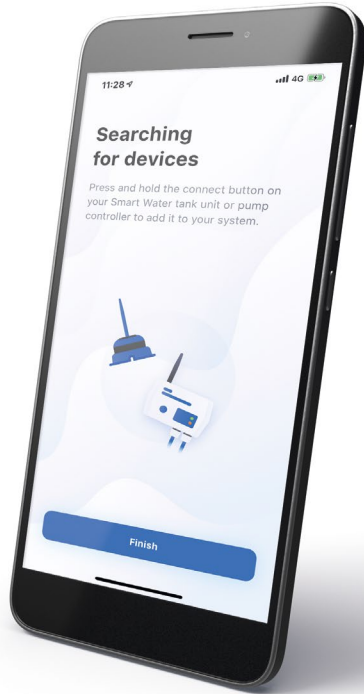
The LCD Keypad will beep and show the message "Tank Added".

Step 4 (App)

If you are setting up your system using the App, download the **Smart Water App** from your preferred app store.



Follow on-screen instructions under **"Set up a new system"** to connect to WiFi.



Press and hold the **Connect Button** on the bottom of the **Tank Transmitter** until the LED illuminates blue for two seconds, followed by two short white flashes. The **Smart Water App** will show a tank icon and message once successfully added.



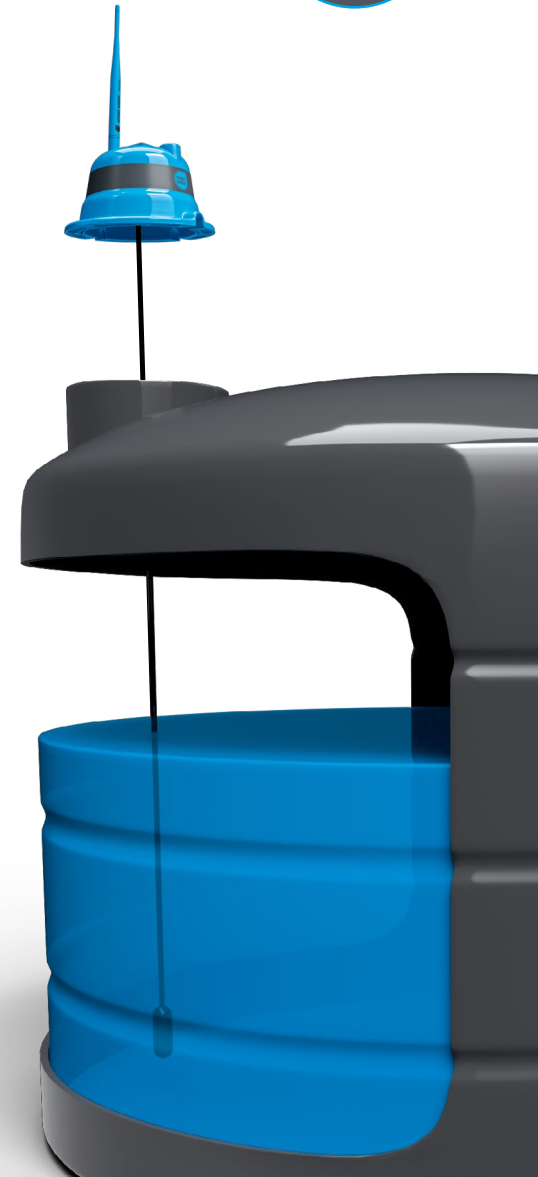
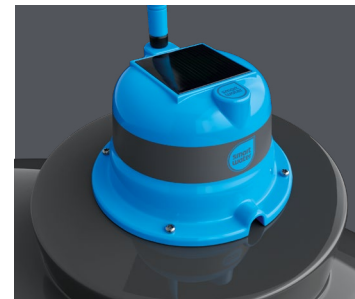
Step 5

Gently lower the **water sensor** into the tank so it sits on the bottom.

Position the sensor away from any outflow pipes.

Any excess cable can also be lowered into the tank.

Fix the tank transmitter to the top of the tank using the screws provided. Ensure the solar panel has good access to sunlight.



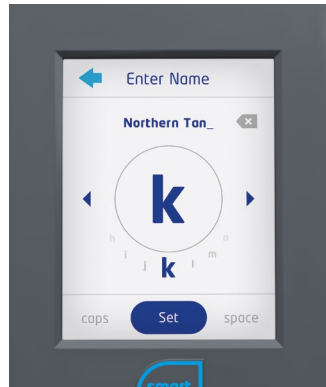
Step 6

Using tank settings on the LCD touch screen or App, set your **Tank Height**.

If your tank is 2.4m high, set 10% lower than this, so approx 2.2m. This allows the system to auto calibrate your exact 100% level.



Set your **Outflow Height**, this is the height that water is drained from your tank, normally around 0.1m.



If desired, set a customised name for your tank.

Congratulations!



Your system is installed.

Repeat the “Add Device” process for any additional tanks or pump controllers to be connected to the system.

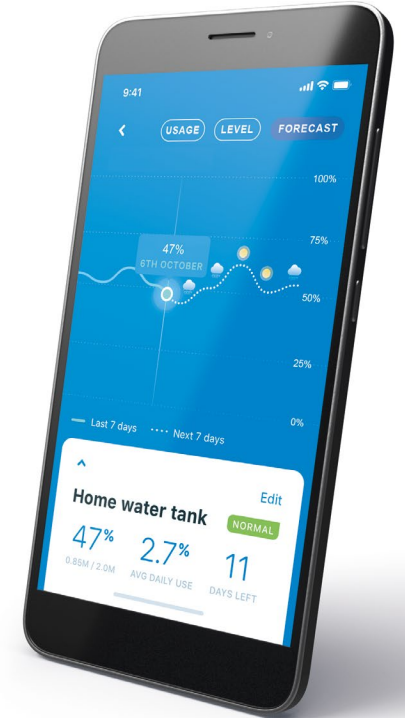
Allow time for Smart Water to learn the water usage of each connected tank.

The LCD and App will provide detailed data of your water level and usage after a few days.

Check out the forecasting and weather page on the App.

Finally, invite other users to view or edit your system via the Smart Water App.

For comprehensive set-up instructions, download the full manual from www.smartwateronline.com



Optional Pump Controller

Go to the “Add Device” screen on the LCD or the “Add a new device” screen on the App.

Power the pump controller based on the model in use (230V AC, 12V DC, or Change-Over).

Connect the pump controller in series with your pump, relay or contactor.

Press the “Connect” button on the pump controller.

The LCD or App will confirm successful connection of the device to your system.

Set a customised name for your pump controller if desired.

Set up automatic rules for the pump operation via the LCD or App.



Optional Active Repeater

This product is very simple to operate... just turn it on!

Position the repeater in a location which has line of sight to the tank transmitter or pump controller and also to the WiFi LCD touch screen or WiFi Gateway.

Optimise the repeater position for access to sunlight.



Smart Hints for best performance

- Be gentle when handling the **Water Sensor**, it is a precision measuring instrument and can be easily damaged
- Ensure maximum access to sunlight for the **Tank Transmitter** solar panel
- Try and optimise **Antenna** position for best reception
- Charge up your **Tank Transmitter** for 3-4 hours before installation
- If using a **Pump Controller** be sure to set the run-timer

Additional Accessories

- Yagi Antenna
- High Power Dipole Antenna
- Bracket Mount Antenna
- Extra Tank Units and Pump Controllers
- Active Repeaters

These and other Smart Water accessories can be purchased online at

www.smartwateronline.com



Wireless Tank Level System

Ph: +64 9 278 6430

NZL: 0800 40 14 14 | AUS: 1800 76 47 25

See more at www.smartwateronline.com



© Copyright 2019 Ivent Solutions Limited. Patent pending.