

Wireless Tank Level System



Quick Start Guide

Components in the kit

- A** Desk Mount **or** Wall Mount WiFi LCD Keypad
- B** Pressure Sensor
- C** Tank Sender **and** Mounting Screws
- D** Antenna
- E** Power Supplies



* Antennae and power supply selection depends on the type of Starter Pack ordered.

Step 1

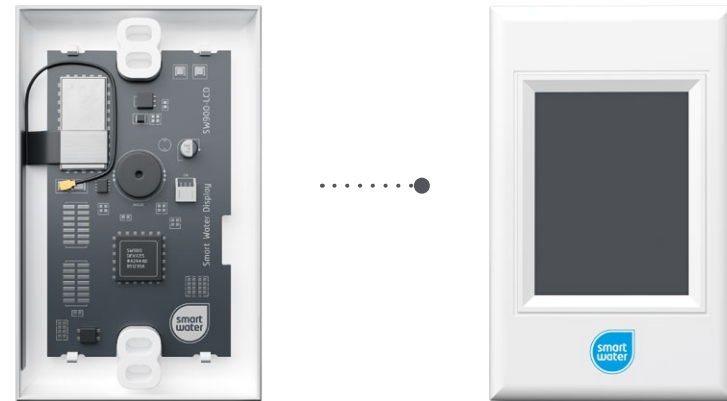
Attach **Antenna** to the **Tank Sender**.



Attach **Antenna** to the **Desk Mount WiFi LCD Keypad**.



Antenna ribbon is pre-fitted in the **Wall Mount WiFi LCD Keypad**.



Step 2

Plug in the **Power Supply** and connect it to the **WiFi LCD Keypad**.

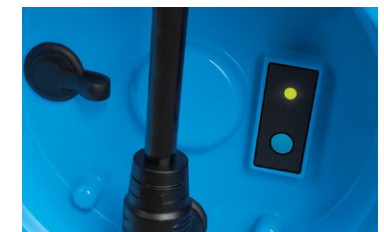


Note: For the Wall Mount WiFi LCD Keypad, Smart Water recommends installation by a certified electrician.

Step 3

Connect the **Pressure Sensor** to the connector on the underside of the **Tank Sender**. Rotate the thumb screw on the end of the connector until it is securely locked.

⚠ The pressure sensor should **NOT** be in the water at this stage.



Once the connector is plugged in the LED will flash green until the unit has successfully booted up.

Step 4

(If using the LCD Keypad)

Ensure the LCD is in the **"Add Device"** screen.



Press and hold the **Connect Button** on the bottom of the **Tank Sender** until the LED illuminates blue for two seconds, followed by two short white flashes.



The LCD Keypad will beep and show the message "Tank Added".

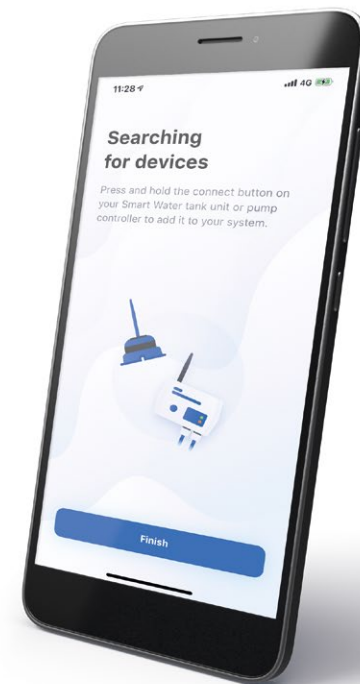
(If using the app)

If you are setting up your system using the app, download the **Smart Water App** from your preferred app store.

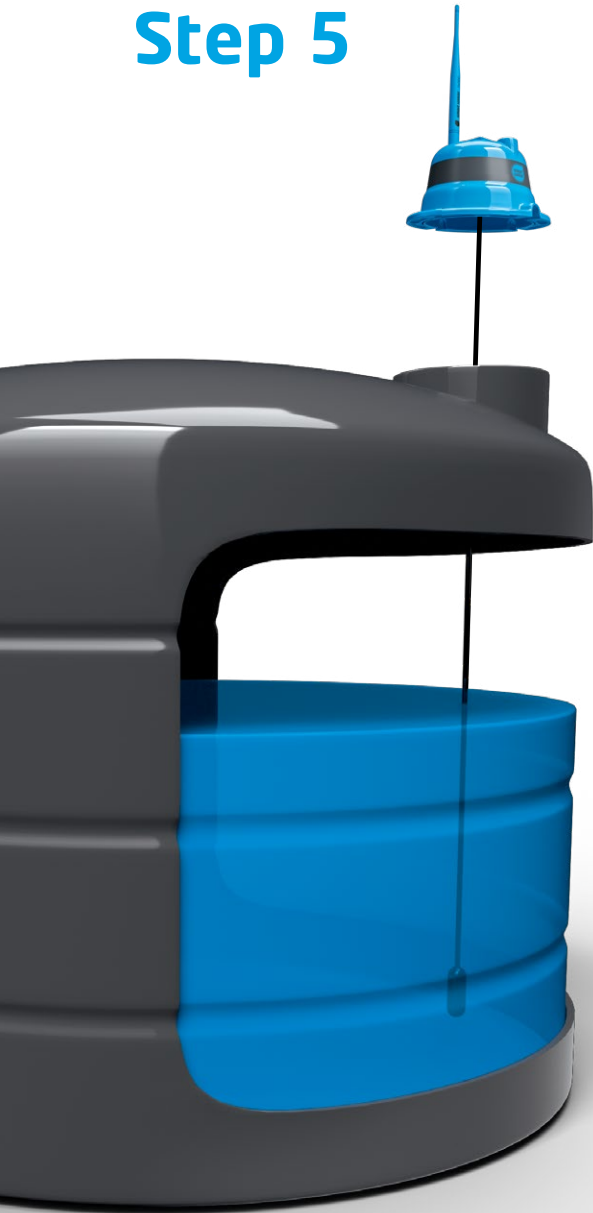


Follow on-screen instructions under **"Set up a new system"** to connect to WiFi.

Press and hold the **Connect Button** on the bottom of the **Tank Sender** until the LED illuminates blue for two seconds, followed by two short white flashes. The **Smart Water App** will show a tank icon and message once successfully added.



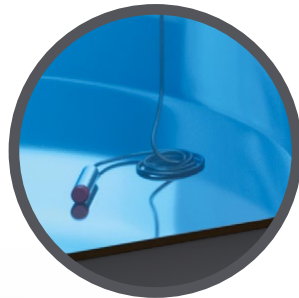
Step 5



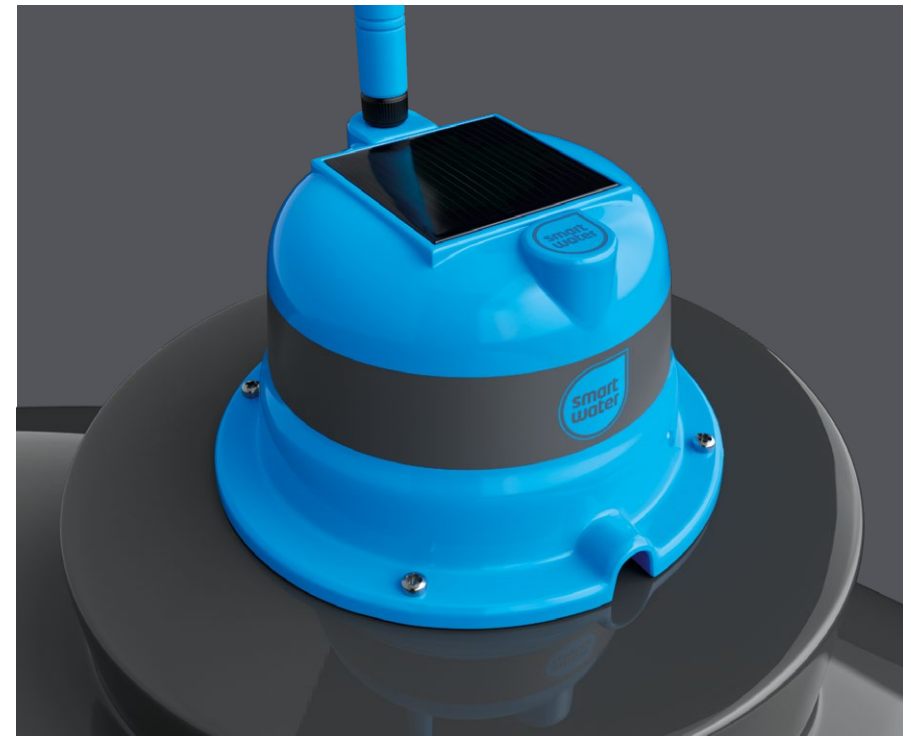
Gently lower the **Pressure Sensor** into the tank so it sits on the bottom.

Position the sensor away from any outflow pipes.

Any excess cable can be lowered into the tank.



Mount the **Tank Sender** to the top of the tank using the screws provided. Ensure the solar panel has good access to sunlight and the vents around the base are not blocked.



Step 6

Using tank settings on the LCD touch screen or app, set your **Tank Height**.



Congratulations!



Your system is installed.

Repeat the “Add Device” process for any additional tank senders or pump controllers to be connected to the system.

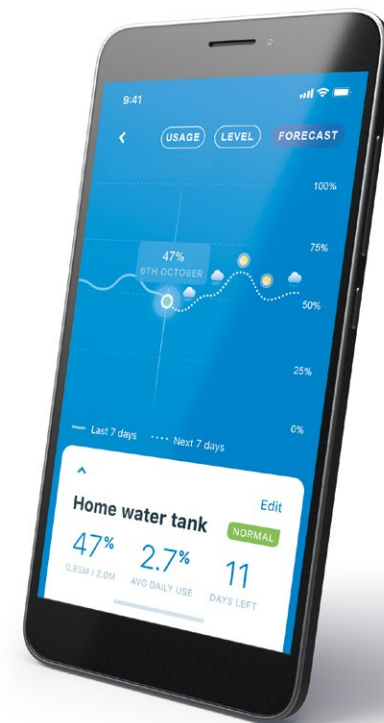
Allow time for Smart Water to learn the water usage of each connected tank.

The LCD and app will provide detailed data of your water level immediately, and usage after a few days.

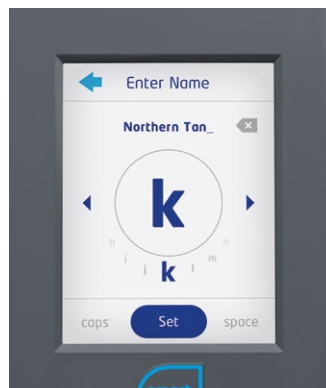
Check out the forecasting and weather page on the premium version of the app.

You can invite other users to view or edit your system via the **Smart Water App**.

For comprehensive set-up instructions, download the full manual from www.smartwateronline.com/manual



Set your **Outflow Height**. This is the height that water is drained from your tank, normally around 0.1m.



If desired, set a customised name for your tank.

Optional Pump Controller



Go to the “Add Device” screen on the LCD or the “Add a new device” screen on the app.

Power the pump controller based on the model in use (230VAC, 120VAC, 24VDC, 12VDC or 12VDC Dry Contact).

Connect the pump controller in series with your pump, relay or contactor.

Press the “Connect” button on the pump controller.

The LCD or app will confirm successful connection of the device to your system.

Set a customised name for your pump controller if desired.

Set up automatic rules for pump operation via the LCD or app.

Smart Hints for best performance



- Be gentle when handling the **Pressure Sensor**, it is a precision measuring instrument and can be easily damaged
- Ensure maximum access to sunlight for the **Tank Sender** solar panel
- Try and optimise **Antenna** position for best reception
- Charge up your **Tank Sender** for 2-3 hours before installation
- If using a **Pump Controller** be sure to set the run-timer for added protection when in automatic mode

Additional Accessories

- Yagi directional antenna
- High power dipole antenna
- Bracket mount antenna
- Additional tank senders (up to 12 per LCD keypad)
- Add up to 12 fully automatic pump controllers to your system
- Solar panels for low light applications
- Off-grid 4G self-contained systems for very remote applications (see page 18)



These and other Smart Water accessories can be purchased online at

www.smartwateronline.com

Off-grid systems

Our off-grid system allows very remote tanks and pumps to be connected to the cloud via 4G/LTE for full system control via the app.

- 84W Solar panel
- 70Ah Deep cycle battery
- 4G/LTE WiFi
- MPPT Solar controller
- Alloy mounting bracket
- Installation accessories



These and other Smart Water accessories can be purchased online at

www.smartwateronline.com



Wireless Tank Level System



Support:

info@smartwateronline.com

See more at www.smartwateronline.com



© Copyright 2019 Ivent Solutions Limited. Patent pending.